

# SPARE PARTS SECTION

## WOOD BAND SAW

### Models

### BP-430A BP-480A

Order Code W4330, Order Code W4340

*Edition No : BP-430A,480A-1*

*Date of Issue : 11/2020*

The following section covers the spare parts diagrams and lists that were current at the time this manual was originally printed. Due to continuous improvements of the machine, changes may be made at any time without notification.

#### HOW TO ORDER SPARE PARTS

1. Have your machines **model number, serial number & date of manufacture** on hand, these can be found on the specification plate mounted on the machine
2. A scanned copy of your parts list/diagram with required spare part/s identified.

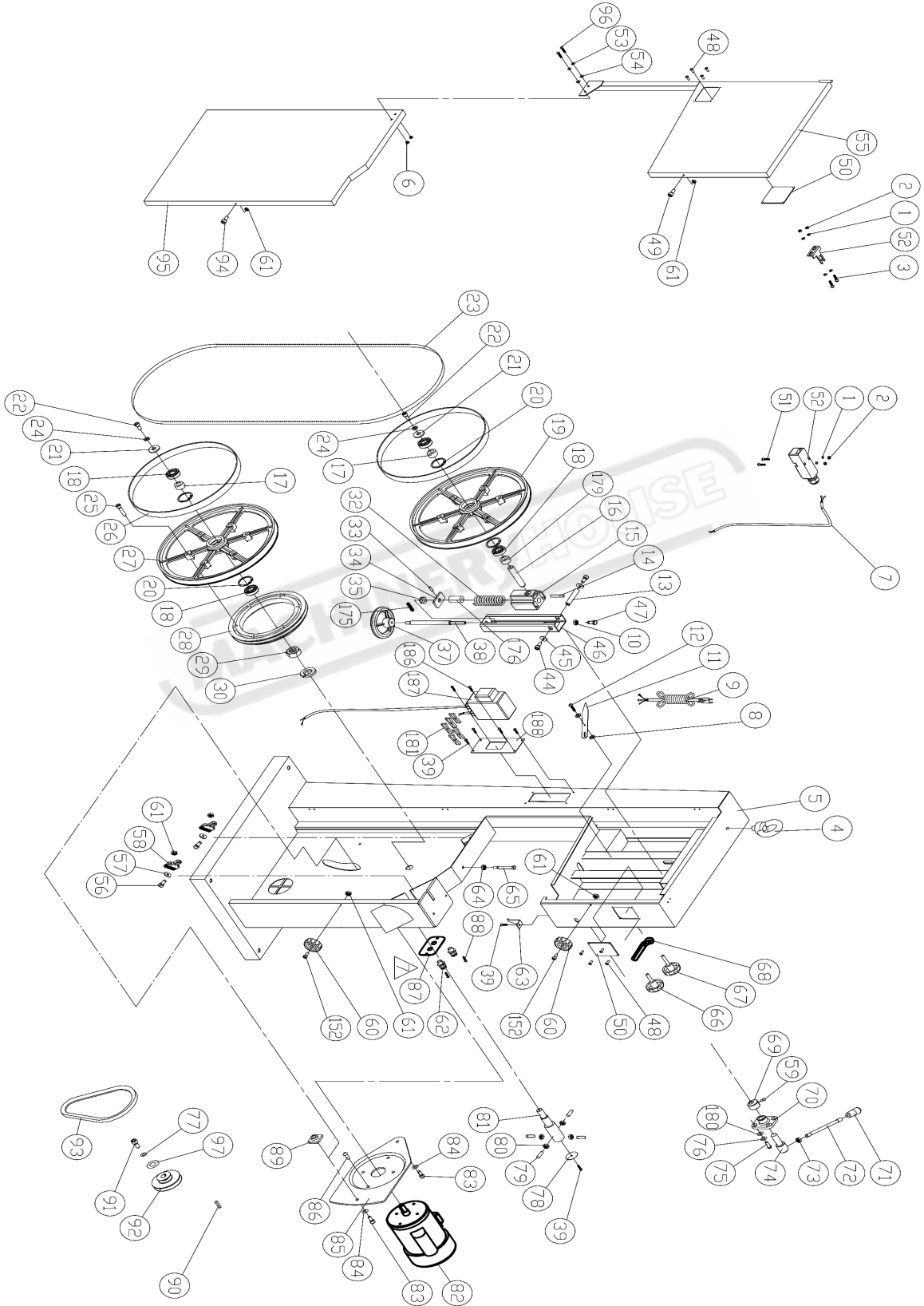
**NOTE: SOME PARTS MAY ONLY BE AVAILABLE AS AN ASSEMBLY**

3. Go to [www.machineryhouse.com.au/contactus](http://www.machineryhouse.com.au/contactus) and fill out the inquiry form attaching a copy of scanned parts list.

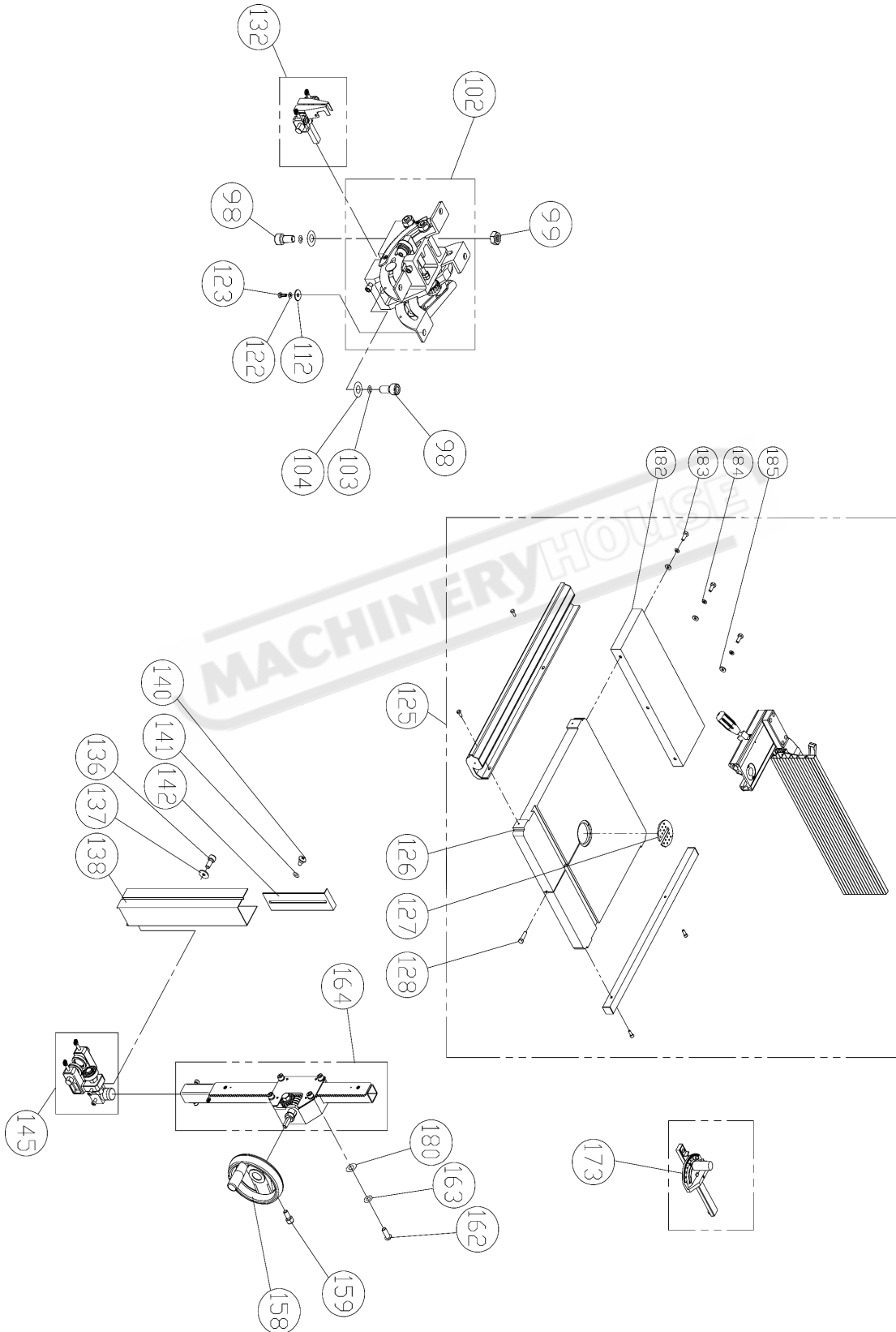
#### CONTENTS

BP-430A Machine Spare Parts Diagram.....	26
BP-430A Machine Spare Parts List.....	28
BP-430A Fence Spare Parts Diagram.....	32
BP-430A Fence Spare Parts List.....	33
BP-430A Upper Guide Parts Diagram & List.....	34
BP-430A Lower Guide Parts Diagram & List.....	35
BP-480A Machine Spare Parts Diagram.....	36
BP-480A Machine Spare Parts List.....	38
BP-480A Fence Spare Parts Diagram.....	42
BP-480A Fence Spare Parts List.....	43
BP-480A Upper Guide Parts Diagram & List.....	43
BP-480A Lower Guide Parts Diagram & List.....	45
Electrical Drawing.....	46

**BP-430A MACHINE SPARE PARTS DIAGRAM**



**BP-430A MACHINE SPARE PARTS DIAGRAM**



**BP-430A MACHINE SPARE PARTS LIST**

No.	Part No.	Description	Specification	Qty
1	WF040808	FLAT WASHER	M4x8	6
2	NH040700	NUT	M4	4
3	SP040200	PAN HEAD SCREW	M4x8	2
4	995101	RING	M10	1
5	136161	MACHINE BODY		1
6	NF050800	NUT	M5	2
7	IC135042	SWITCH CORD		1
8	WF061310	FLAT WASHER	M6x13	2
9	IC135001	POWER CORD	3P+G	1
10	NH061000	NUT	M6	1
11	135040	POINTER		1
12	135073	STEP SCREW		1
13	135012	UPPER SHAFT		1
14	PS053600	SPRING PIN	Ø5x36	1
15	135017	UPPER WHEEL SHAFT HINGE		1
16	135066	UPPER WHEEL SHAFT		1
17	135039	BUSHING		2
18	BB620403	BALL BEARING	6204LLU	4
19	135024	UPPER WHEEL	Ø 17"	1
20	RR470000	RETAINING RING	R47	4
21	WF083030	FLAT WASHER	M8x30	2
22	SR089400	HEX SOCKET BOLT	M8x16	2
23	135075	SAW BLADE	6PTI 3352.8x1/2"0.5mm	1
24	WS080000	SPRING WASHER	M8	2
25	SR060600	HEX SOCKET BOLT	M6x30	6
26	135105	TIRE		2
27	135014	LOWER WHEEL	Ø 17"	1
28	135007	IDLE PULLEY		1
29	NH633801	NUT	1"-14 UNF	1
30	WS630000	SPRING WASHER	1"	1
31				
32	135032	SPRING	Ø3x16	1
33	PS031600	SPRING PIN		1
34	135042	LOCATE BLOCK	51201	1
35	994301	BEARING		1
36				
37	135002	HANDLE WHEEL		1
38	135003	ADJUSTING BOLT	M5x10	1
39	SF050200	PAN HEAD BOLT W/FLANGE		8

**BP-430A MACHINE SPARE PARTS LIST**

No.	Part No.	Description	Specification	Qty
40				
41				
42				
43				
44	SR089400	HEX SOCKET BOLT	M8x16	2
45	WF083030	FLAT WASHER	M8x30	2
46	135016	UPPER WHEEL SLIDING BRACKET		1
47	SR060500	HEX SOCKET BOLT	M6x25	1
48	BR000044	RIVET	Ø3.2x10	8
49	SR060200	HEX SOCKET BOLT	M6x10	1
50	135004	LIMPID PIECE		2
51	SF040700	PAN HEAD BOLT W/FLANGE	M4x35	2
52	136475	DOOR LATCH SWITCH(ASM)	AZD-S11	1
53	WS050000	SPRING WASHER	M5	2
54	WF051210	FLAT WASHER	M5x12	2
55	136164	UPPER WHEEL COVER		1
56	SH060500	HEX HEAD BOLT	M6x25	2
57	WF061310	FLAT WASHER	M6x13	2
58	135051	BRUSH		2
59	SR060500	HEX SOCKET BOLT	M6x25	1
60	135041	KNOB		2
61	NL061000	NYLON NUT	M6	6
62	709416	STRAIN RELIEF	M16	2
63	135011	HEIGHT POINTER		1
64	NH081300	NUT	M8	1
65	SH081800	HEX HEAD BOLT	M8x90	1
66	135022	KNOB SCREW	M10x20	1
67	135020	KNOB SCREW	M10x53	1
68	135028	LOCATE HANDLE	M10	1
69	135030	CAM		1
70	135038	LOCATE BLOCK		1
71	620021	KNOB		1
72	620020	LEVER ROD		1
73	NH121900	NUT	M12	1
74	135036	SHAFT		1
75	SJ080400	HEX SOCKET HEAD SCREW	M8x20	4
76	WS080000	SPRING WASHER	M8	4
77	WS080000	SPRING WASHER	M8	1
78	135013	COVER		1
79	SS080400	SET BOLT	M8x20	4
80	NH081300	NUT	M8	4

**BP-430A MACHINE SPARE PARTS LIST**

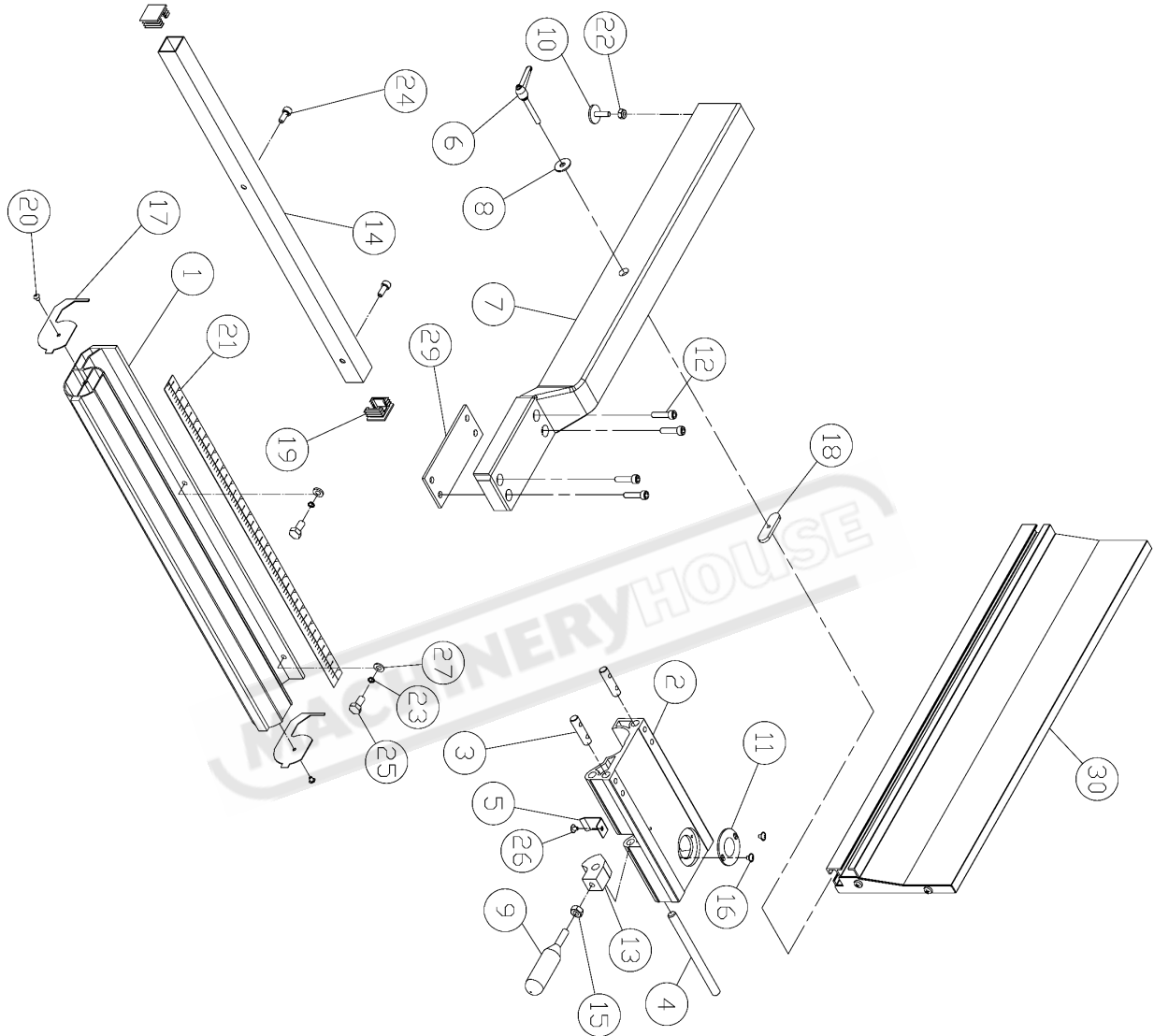
No.	Part No.	Description	Specification	Qty
81	135005	LOWER WHEEL SHAFT		1
82	MH135001	MOTOR	1 HP	1
83	SR100500	HEX SOCKET BOLT	M10x25	2
84	WS100000	SPRING WASHER	M10	2
85	135064	MOTOR BRACKET		1
86	SJ080400	HEX SOCKET HEAD SCREW	M8x20	4
87	135081	PLATE		1
88	SF050200	PAN HEAD BOLT W/FLANGE	M5x10	2
89	135065	LOCATE BLOCK		1
90	KS050535	KEY	5x5x35	1
91	SH080402	HEX HEAD BOLT	M8x20(L.H)	1
92	135008	MOTOR PULLEY		1
93	LA420000	V-BELT	A42	1
94	SR060200	HEX SOCKET BOLT	M6x10	1
95	136165	LOWER WHEEL COVER		1
96	SJ059400	HEX SOCKET BOTTOM HEAD SCREW	M5x16	2
97	WF083030	FLAT WASHER	M8x30	1
98	SR100700	HEX SOCKET BOLT	M10x35	2
99	NH101700	NUT	M10	1
100				
101				
102	AB135021	TRUNNION SUPPORT BRACKET(ASM)		1
103	WS100000	SPRING WASHER	M10	2
104	WF102325	FLAT WASHER	M10x23	2
105				
106				
107				
108				
109				
110				
111				
112	WF081820	FLAT WASHER	M8x18	4
122	WS080000	SPRING WASHER	M8	4
123	SH089400	HEX HEAD BOLT	M8X16	4
124				
125	QF198021-B	17" FENCE SET		1
126	135126	TABLE		1
127	135010	TABLE INSERT		1
128	100038	TABLE PIN		1
132	AB135059	LOWER BLADE GUIDE SUPPORT(ASM)		1
135	135035	RIGHT COVER		1
136	SR050200	HEX SOCKET BOLT	M5X10	2
137	WF051210	FLAT WASHER	M5X12	2
138	135034	PROTECT COVER(ASM)		1
140	135073	STEP SCREW		1

**BP-430A MACHINE SPARE PARTS LIST**

No.	Part No.	Description	Specification	Qty
141	135054	FIBER WASHER	4-13x6x1.2	1
142	135037	SLIDING PLATE		1
143				
144				
145	AB135055	UPPER BLADE GUIDE SUPPORT(ASM)		1
146				
152	SR060400	HEX SOCKET BOLT	M6x20	2
153				
154				
155				
156				
157				
158	135006	HANDLE WHEEL		1
159	SR060400	HEX SOCKET BOLT	M6x20	1
160				
161				
162	SJ080400	HEX SOCKET BOTOM HEAD SCREW	M8x20	4
163	WS080000	SPRING WASHER	M8	4
164	AB135050	GUIDE BRACKET(ASM)		1
173	AB198101	MITER GAUGE ASS'Y		
174				
175	SS069300	SET SCREW	M6x10	1
176	135067	BUSHING		1
177				
178				
179	612112	BUSHING		1
180	WF081820	FLAT WASHER	M8x18	4
181	136019	WIRE CONECTOR	224-201	5
182	135127	EXTEND TABLE		1
183	SH080400	HEX HEAD BOLT	M8x20	3
184	WS080000	SPRING WASHER	M8	3
185	WF081818	FLAT WASHER	M8xφ18	3
186	ST039304	TAPPING SCREW	M3.5x12(AB)	2
187	136017B	BRAKING SWITCH	K400	1
188	135099	SWITCH PLATE		1

**NOTE: SOME INDIVIDUAL PARTS MAY ONLY BE AVAILABLE AS AN ASSEMBLY**

**BP-430A FENCE SPARE PARTS DIAGRAM**



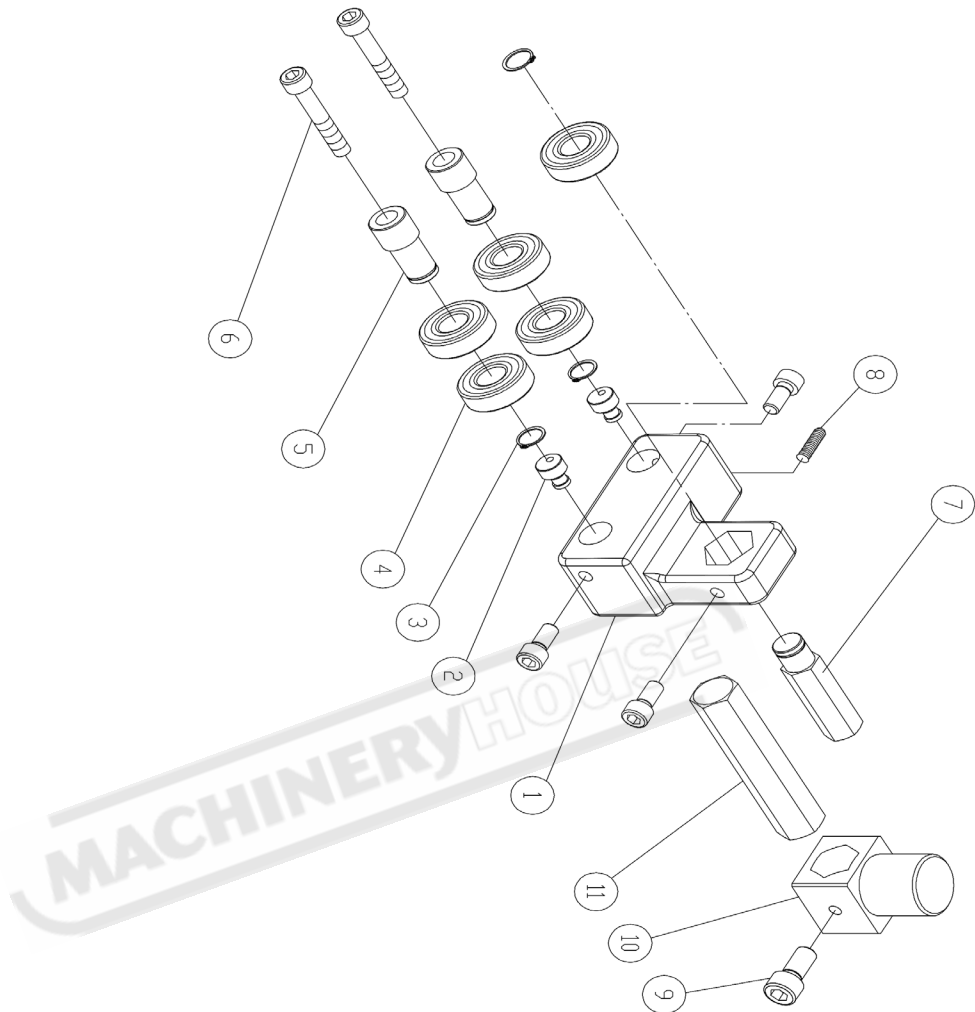


**BP-430A FENCE SPARE PARTS LIST**

No.	Part No.	Description	Specification	Qty
30	ACI98082	FENCE (AL)	590	
29	198008	BRACKET	T=3	
27	WF061310	FLAT WASHER	M6x13	1
26	SF049200	PAN HEAD BOLT W/FLANGE	M4x8	2
25	SH060400	HEX HEAD BOLT	M6x20	1
24	SR069400	HEX SOCKET BOLT	M6x16	2
23	wS060000	SPRING WASHER	M6	2
22	NH061000	NUT	M6	2
21	LM001035	SCALE		
20	ST039300	TAPPING SCREW	M3.5x12	
19	198016	PLUGGED		2
18	200527	MOVING PLATE		2
17	198014	GUARD PIECE		
16	SF049100	PAN HEAD BOLT W/FLANGE	M4x6	2
15	NH081300	NUT	MB	2
14	198020	SQUARE TUBE	640	
13	198004	FIXED LUMP		
12	SR060500	HEX SOCKET BOLT	M6x25	
11	198007	CONVEX		4
10	198012	ADJUST SCREW		
09	198013	HANDLE		
08	WF082320	FLAT WASHER	M8xØ23	
07	198077	SUPPORT TUBE	590	
06	198074	LOCK KNOB	M8x44	
05	198006	SPRING WASHER		
04	198005	SHAFT		
03	198003	FIXED SHAFT		
02	198002	ADJUST BASE		2
01	198018	FIXED BASE	640	1

**NOTE: SOME INDIVIDUAL PARTS MAY ONLY BE AVAILABLE AS AN ASSEMBLY**

**BP-430A UPPER GUIDE SPARE PARTS DIAGRAM**

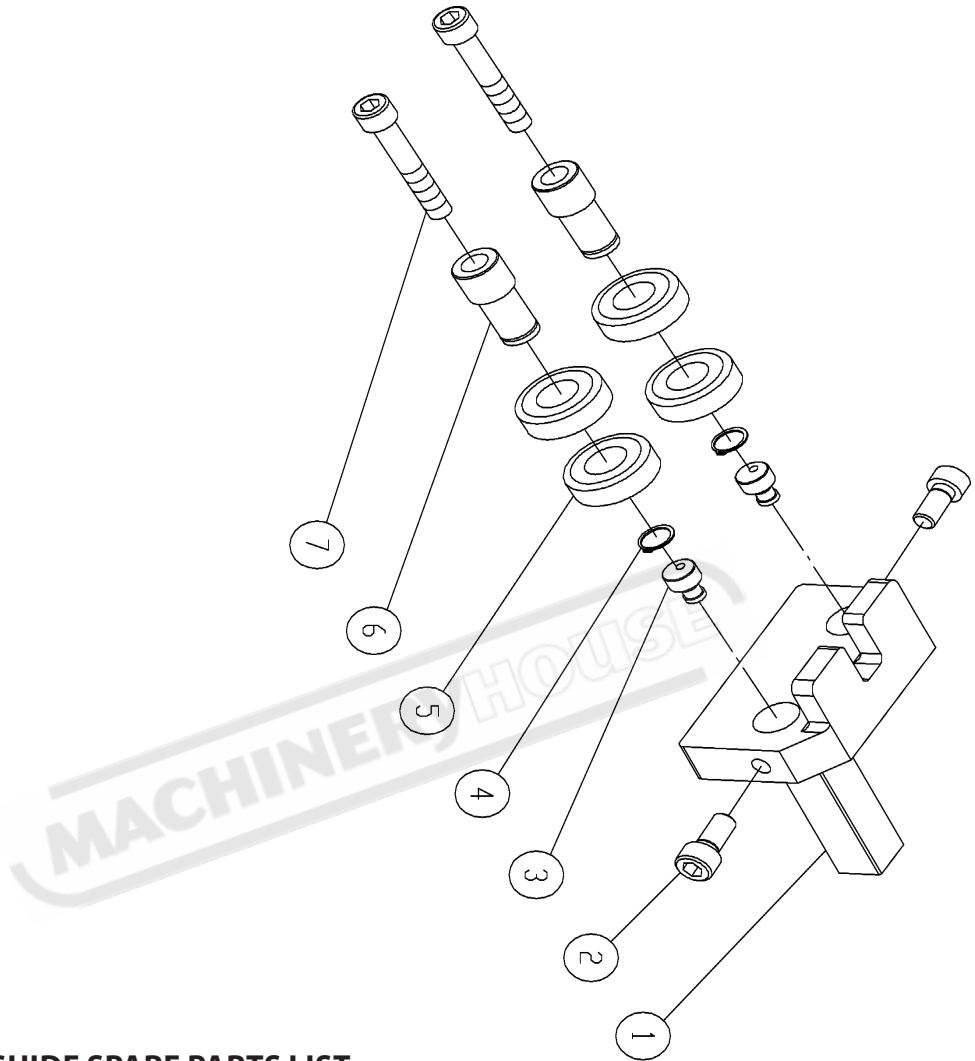


**BP-430A UPPER GUIDE SPARE PARTS LIST**

No.	Part No.	Description	Specification	Qty
1	135091	UPPER BLADE GUIDE SUPPORT		1
2	13590	BIAS SHAFT		2
3	RS150000	RING	S15	3
4	BB620202A	BALL BEARING	6202ZZ	5
5	136445	HANDLE BUSHING		2
6	SR060703	HEX SOCKET BOLT	M6x35	2
7	135060	UPPER SPACING SLEEVE		
8	SS060200	SET BOLT	M6x10	
9	SR069400	HEX SOCKET BOLT	M6x16	4
10	135057	UPPER GUIDE SUUPORT BLOCK		
11	135053	ADJUST BAR		

**NOTE: SOME INDIVIDUAL PARTS MAY ONLY BE AVAILABLE AS AN ASSEMBLY**

**BP-430A LOWER GUIDE SPARE PARTS DIAGRAM**

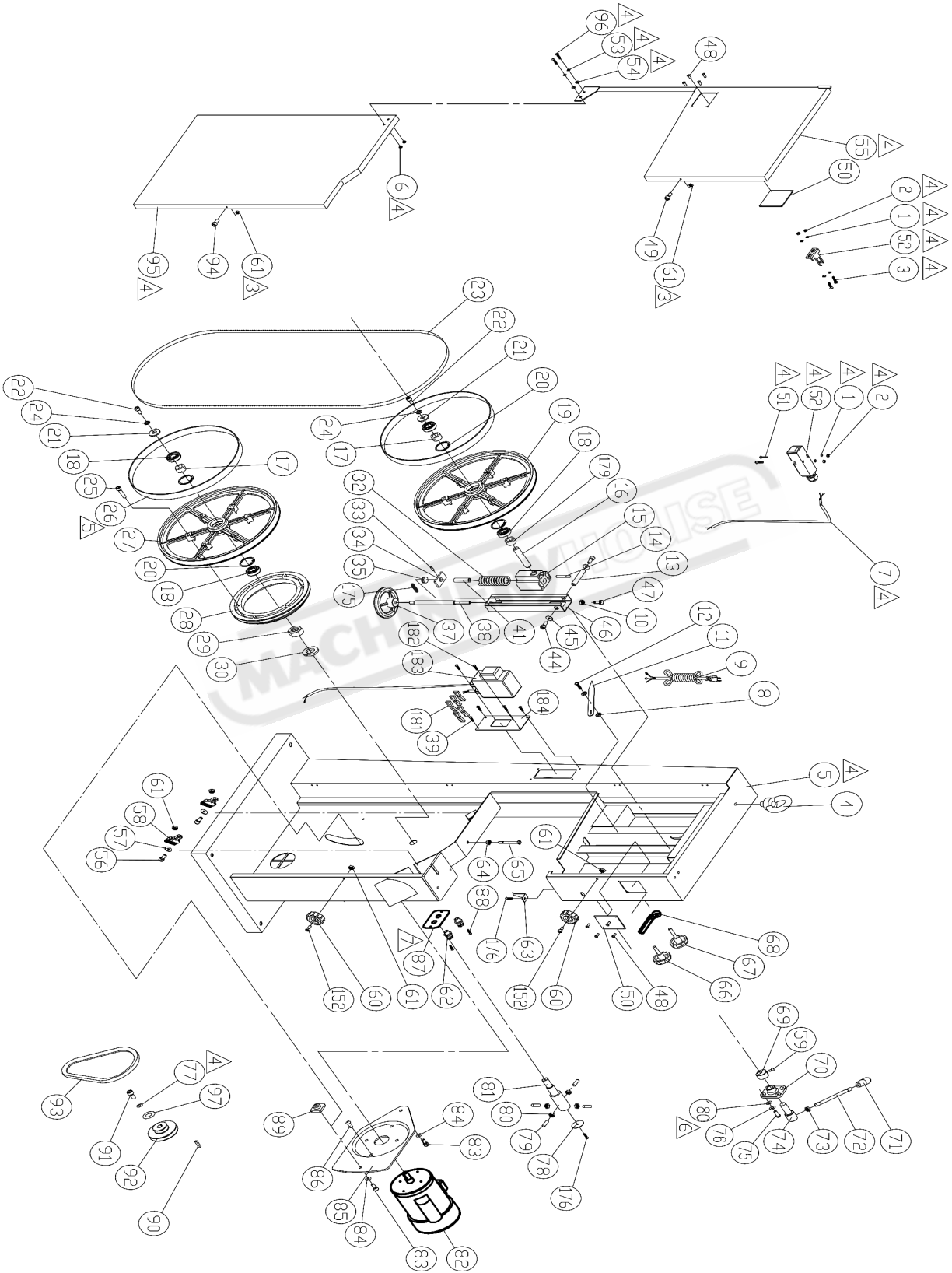


**BP-430A LOWER GUIDE SPARE PARTS LIST**

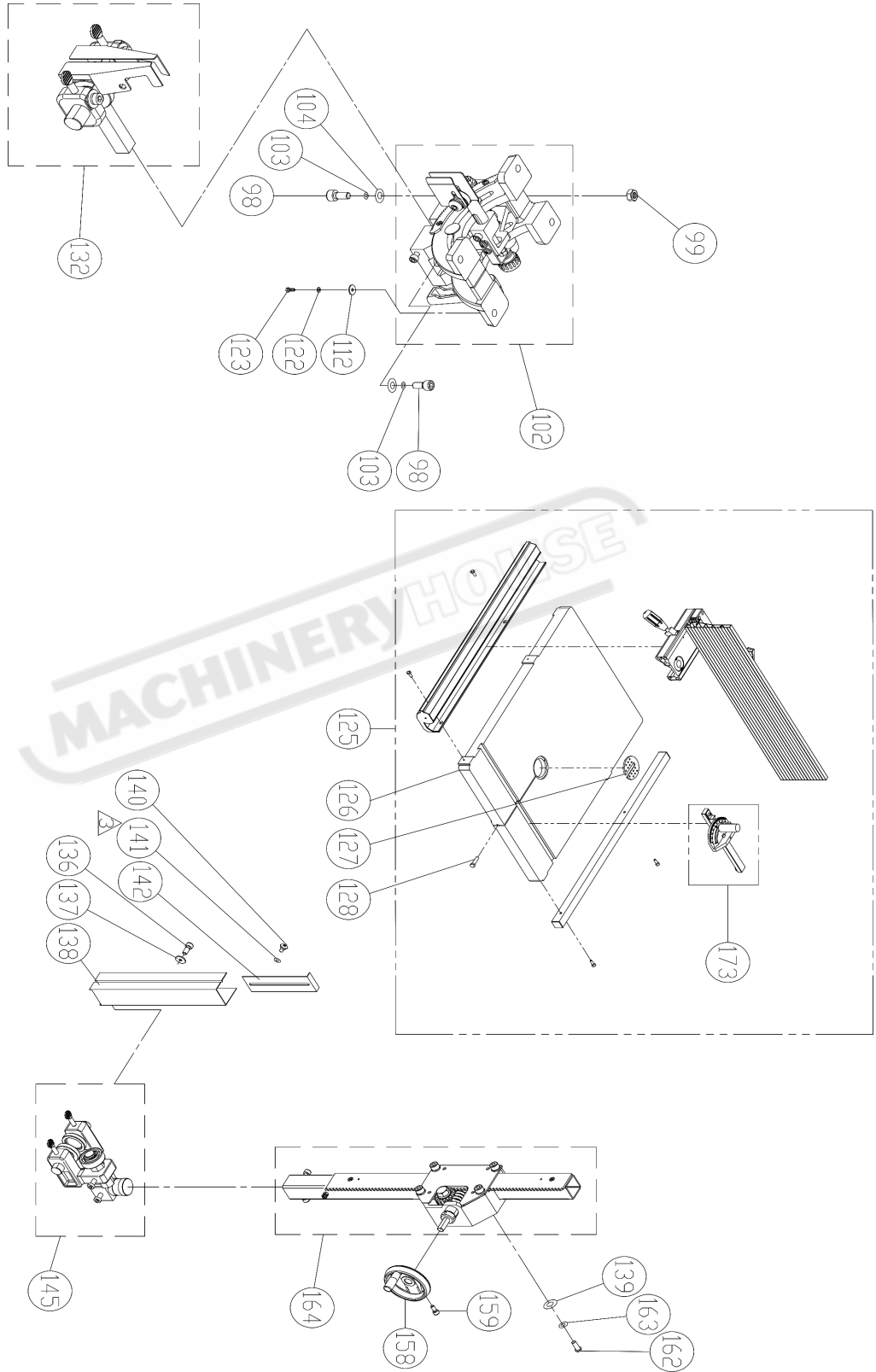
No.	Part No.	Description	Specification	Qty
1	135091	UPPER BLADE GUIDE SUPPORT		1
2	135090	BIAS SHAFT		2
3	RS150000	RING	S15	3
4	BB620202A	BALL BEARING	6202ZZ	5
5	136445	HANDLE BUSHING		2
6	SR060703	HEX SOCKET BOLT	M6x35	2
7	135060	UPPER SPACING SLEEVE		
8	SS060200	SET BOLT	M6x10	
9	SR069400	HEX SOCKET BOLT	M6x16	4
10	135057	UPPER GUIDE SUUPPORT BLOCK		
11	135053	ADJUST BAR		

**NOTE: SOME INDIVIDUAL PARTS MAY ONLY BE AVAILABLE AS AN ASSEMBLY**

**BP-480A MACHINE SPARE PARTS DIAGRAM**



**BP-480A MACHINE SPARE PARTS DIAGRAM**



**BP-480A MACHINE SPARE PARTS LIST**

No.	Part No.	Description	Specification	Qty
1	WF040808	FLAT WASHER	M4x8	6
2	NH040700	NUT	M4	4
3	SP040200	PAN HEAD SCREW	M4x8	2
4	995101	RING	M10	1
5	13612	MACHINE BODY		1
6	NF050800	NUT	M5	2
7	IC135042	SWITCH CORD		1
8	WF061310	FLAT WASHER	M6x13	2
9	IC135001	POWER CORD	3P+G	1
10	NH061000	NUT	M6	1
11	135040	POINTER		1
12	135073	STEP SCREW		1
13	135012	UPPER SHAFT		1
14	PS053600	SPRING PIN	Ø5x36	1
15	135017	UPPER WHEEL SHAFT HINGE		1
16	135066	UPPER WHEEL SHAFT		1
17	135039	BUSHING		2
18	BB620403	BALL BEARING	6204LLU	4
19	136002	UPPER WHEEL	Ø 19"	1
20	RR470000	RETAINING RING	R47	4
21	WF083030	FLAT WASHER	M8x30	2
22	SR089400	HEX SOCKET BOLT	M8x16	2
23	136010	SAW BLADE	6TPI 3632.2x3/4"0.5mm	1
24	WS080000	SPRING WASHER	M8	2
25	SR060600	HEX SOCKET BOLT	M6x30	6
26	136065	TIRE		2
27	136003	LOWER WHEEL	Ø 19"	1
28	135007	IDLE PULLEY		1
29	NH633801	NUT	1"-14 UNF	1
30	WS630000	SPRING WASHER	1"	1
31				
32	135032	SPRING		1
33	PS031600	SPRING PIN	Ø3x16	1
34	135042	LOCATE BLOCK		1
35	994301	BEARING	51201	1
36				
37	135002	HANDLE WHEEL		1
38	136007	ADJUSTING BOLT		1
39	SF050200	PAN HEAD BOLT W/FLANGE	M5x10	8

**BP-480A MACHINE SPARE PARTS LIST**

No.	Part No.	Description	Specification	Qty
40				
41	135067	BUSHING		1
42				
43				
44	SR089400	HEX SOCKET BOLT	M8x16	2
45	WF083030	FLAT WASHER	M8x30	2
46	135016	UPPER WHEEL SLIDING BRACKET		1
47	SR061000	HEX SOCKET BOLT	M6x25	1
48	BR000041	RIVET	Ø3.2x10	8
49	SR060200	HEX SOCKET BOLT	M6x10	1
50	135004	LIMPID PIECE		2
51	SF040700	PAN HEAD BOLT W/FLANGE	M4x35	2
52	136457	DOOR LATCH SWITCH(ASM)	AZD-S11	1
53	WS050000	SPRING WASHER	M5	2
54	136475	FLAT WASHER	M5x12	2
55	136166	UPPER WHEEL COVER		1
56	SH060500	HEX HEAD BOLT	M6x25	2
57	WF061310	FLAT WASHER	M6x13	2
58	135051	BRUSH		2
59	WF061310	HEX SOCKET BOLT	M6x25	1
60	135051	KNOB		2
61	NL061000	NYLON NUT	M6	6
62	709416	STRAIN RELIEF	M16	2
63	135011	HEIGHT POINTER		1
64	NH081300	NUT	M8	1
65	SH081800	HEX HEAD BOLT	M8x90	1
66	135022	KNOB SCREW	M10x20	1
67	135020	KNOB SCREW	M10x53	1
68	135028	LOCATE HANDLE	M10	1
69	135030	CAM		1
70	135038	LOCATE BLOCK		1
71	620021	KNOB		1
72	620020	LEVER ROD		1
73	NH121900	NUT	M12	1
74	135036	SHAFT		1
75	SJ080400	HEX SOCKET HEAD SCREW	M8x20	4
76	WS080000	SPRING WASHER	M8	4
77	WS080000	SPRING WASHER	M8	1
78	135013	COVER		1
79	SS080400	SET BOLT	M8x20	4
80	NH081300	NUT	M8	4

**BP-480A MACHINE SPARE PARTS LIST**

No.	Part No.	Description	Specification	Qty
81	135005	LOWER WHEEL SHAFT		1
82	MH135004	MOTOR	1 HP	1
83	SR100500	HEX SOCKET BOLT	M10x25	2
84	WS100000	SPRING WASHER	M10	2
85	135064	MOTOR BRACKET		1
86	SJ080400	HEX SOCKET HEAD SCREW	M8x20	4
87	135081	PLATE		1
88	SF050200	PAN HEAD BOLT W/FLANGE	M5x10	2
89	135065	LOCATE BLOCK		1
90	KS050535	KEY	5x5x35	1
91	SH080402	HEX HEAD BOLT	M8x20(L.H)	1
92	135008	MOTOR PULLEY		1
93	LA420000	V-BELT	A42	1
94	SR060200	HEX SOCKET BOLT	M6x10	1
95	136167	LOWER WHEEL COVER		1
96	SJ059400	HEX SOCKET BOTTOM HEAD SCREW	M5x16	2
97	WF083030	FLAT WASHER	M8x30	1
98	SR100700	HEX SOCKET BOLT	M10x35	2
99	NH101700	NUT	M10	1
100				
101				
102	AB135250	TRUNNION SUPPORT BRACKET(ASM)		1
103	WS100000	SPRING WASHER	M10	2
104	WF102325	FLAT WASHER	M10x23	2
105				
106				
107				
108				
109				
110				
111				
112	WF081820	FLAT WASHER	M8x18	4
122	WS080000	SPRING WASHER	M8	4
123	SH089400	HEX HEAD BOLT	M8X16	4
124				
125	QF198022-B	19" FENCE SET		1
126	135127	TABLE		1
127	135010	TABLE INSERT		1
128	100038	TABLE PIN		1
132	AB135059	LOWER BLADE GUIDE SUPPORT(ASM)		1
135				
136	SR050200	HEX SOCKET BOLT	M5X10	2
137	WF051210	FLAT WASHER	M5X12	2
138	135034	PROTECT COVER(ASM)		1
140	135073	STEP SCREW		1

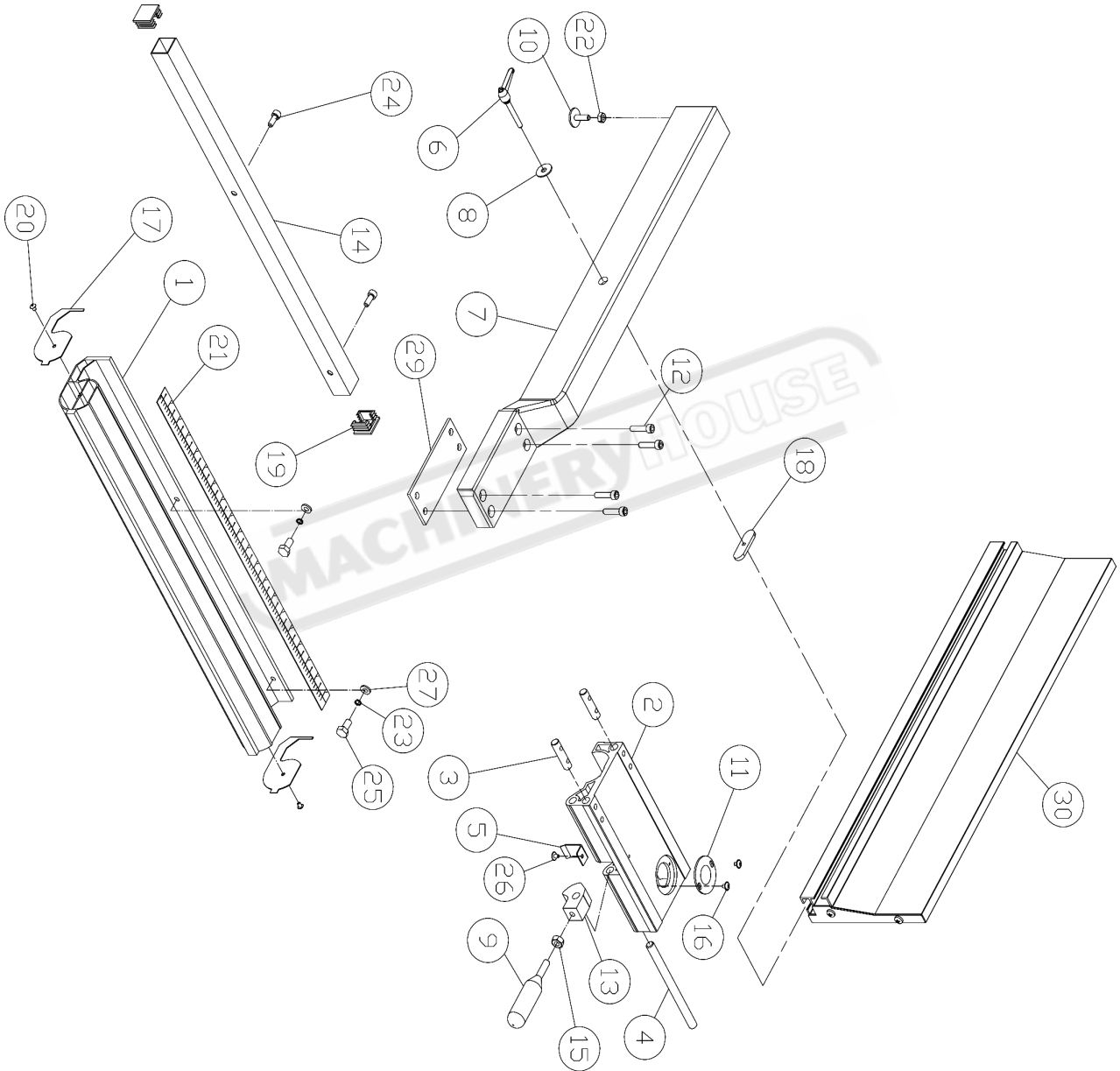


**BP-480A MACHINE SPARE PARTS LIST**

No.	Part No.	Description	Specification	Qty
141	135054	FIBER WASHER	4-13x6x1.2	1
142	135037	SLIDING PLATE		1
143				
144				
145	AB135055	UPPER BLADE GUIDE SUPPORT(ASM)		1
146				
152	SR060400	HEX SOCKET BOLT	M6x20	2
153				
154				
155				
156				
157				
158	135006	HANDLE WHEEL		1
159	SR060400	HEX SOCKET BOLT	M6x20	1
160				
161				
162	SJ080400	HEX SOCKET BOTOM HEAD SCREW	M8x20	4
163	WS080000	SPRING WASHER	M8	4
164	AB135050	GUIDE BRACKET(ASM)		1
173	AB198101	MITER GAUGE ASS'Y		
174				
175	SS060400	SET SCREW	M6x20	1
176	SF050200	PAN HEAD BOLT W/FLANGE	M5x10	2
177				
178				
179	612112	BUSHING		1
180	WF081820	FLAT WASHER	M8x18	4
181	136019	WIRE CONECTOR	224-201	5
182	135127	TAPPING SCREW	M3.5x12(AB)	2
183	136017B	BRAKING SWITCH	K400	1
184	135099	SWITCH PLATE		1
185				
186				
187				
188				

**NOTE: SOME INDIVIDUAL PARTS MAY ONLY BE AVAILABLE AS AN ASSEMBLY**

**BP-480A FENCE SPARE PARTS DIAGRAM**

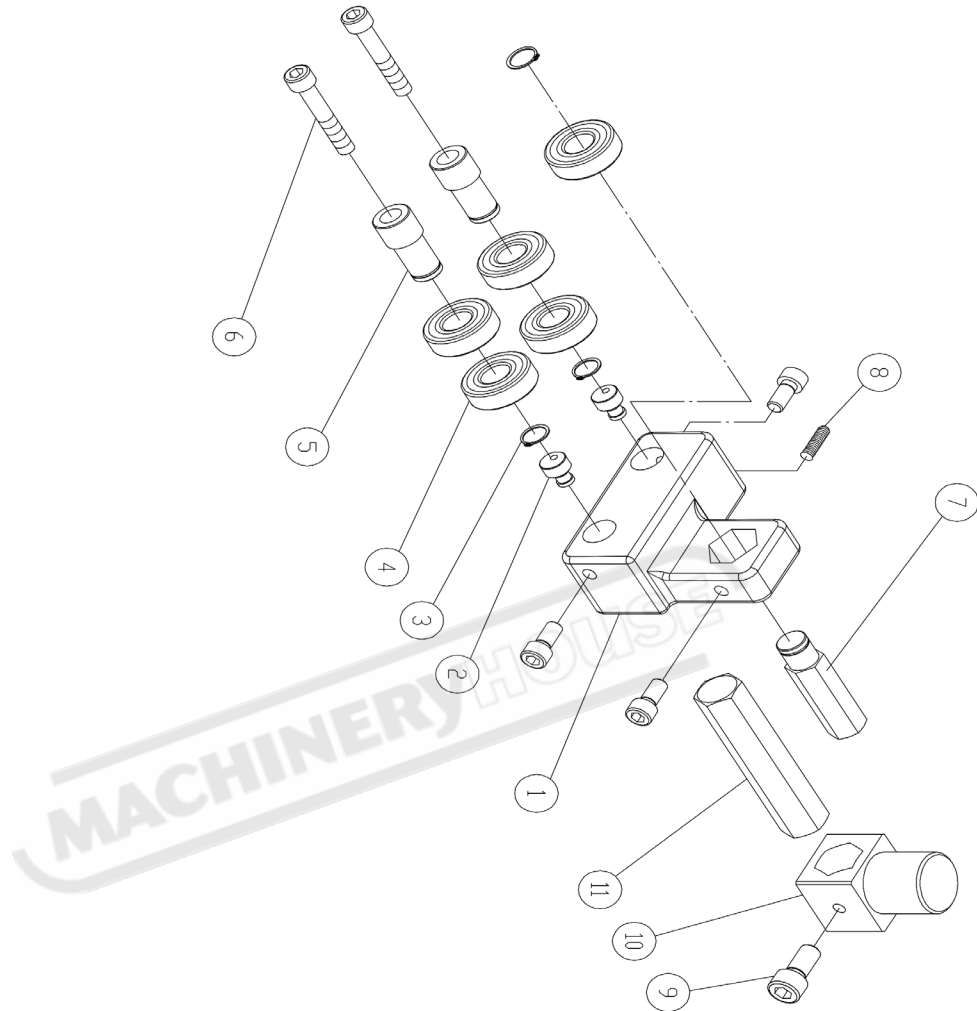


**BP-480A FENCE SPARE PARTS LIST**

No.	Part No.	Description	Specification	Qty
30	AC198083	FENCE (AL)	640	
29	198008	BRACKET	T=3	
27	WF061310	FLAT WASHER	M6x13	1
26	SF049200	PAN HEAD BOLT W/FLANGE	M4x8	2
25	SH060400	HEX HEAD BOLT	M6x20	1
24	SR069400	HEX SOCKET BOLT	M6x16	2
23	3S060000	SPRING WASHER	M6	2
22	NH061000	NUT	M6	2
21	LM001035	SCALE		
20	ST039300	TAPPING SCREW	M3.5x12	
19	198016	PLUGGED		2
18	200527	MOVING PLATE		2
17	198014	GUARD PIECE		
16	SF049100	PAN HEAD BOLT W/FLANGE	M4x6	2
15	NH081300	NUT	M8	2
14	198023	SQUARE TUBE	710	
13	198004	FIXED LUMP		
12	SR060500	HEX SOCKET BOLT	M6x25	
11	198007	CONVEX		4
10	198012	ADJUST SCREW		
09	198013	HANDLE		
08	WF082320	FLAT WASHER	M8x Ø 23	
07	198078	SUPPORT TUBE	640	
06	198074	LOCK KNOB	M8x44	
05	198006	SPRING WASHER		
04	198005	SHAFT		
03	198003	FIXED SHAFT		
02	198002	ADJUST BASE		2
01	198022	FIXED BASE	710	1

**NOTE: SOME INDIVIDUAL PARTS MAY ONLY BE AVAILABLE AS AN ASSEMBLY**

**BP-480A UPPER GUIDE SPARE PARTS DIAGRAM**

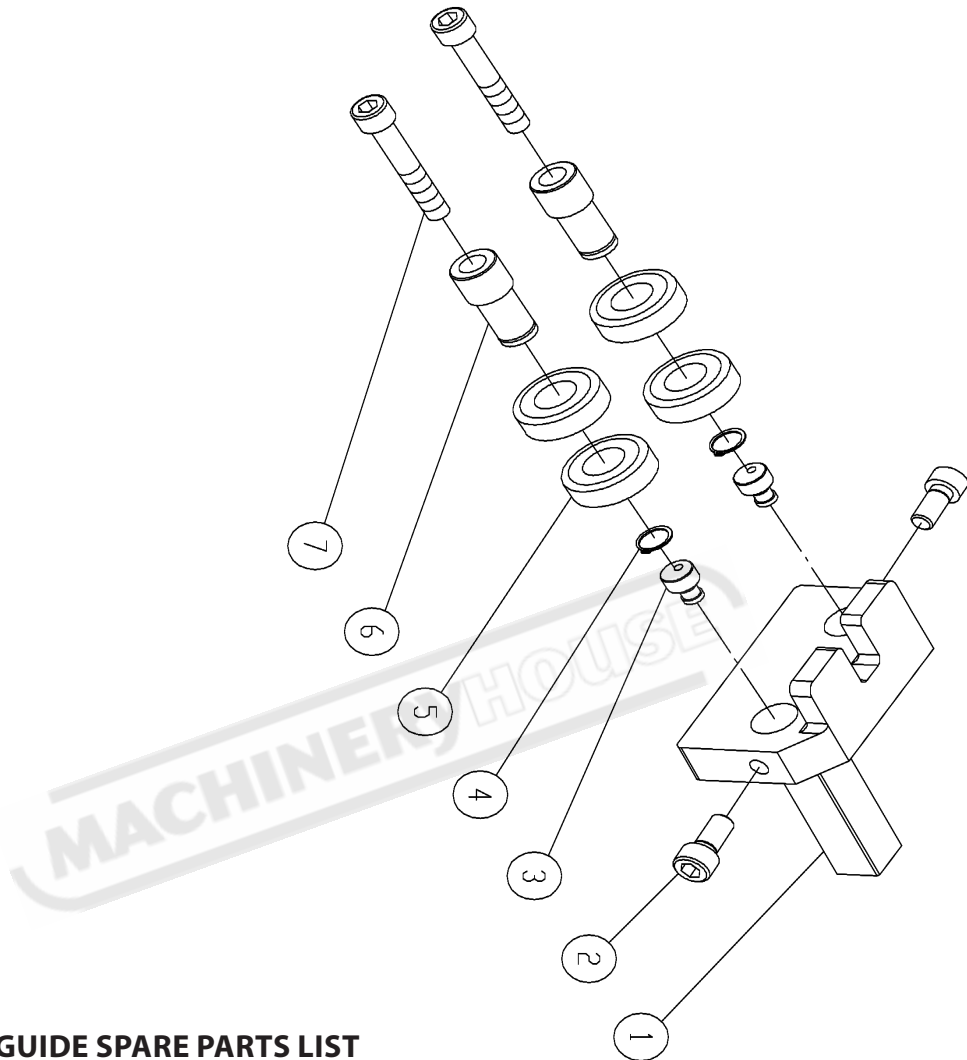


**BP-480A UPPER GUIDE SPARE PARTS LIST**

No.	Part No.	Description	Specification	Qty
1	135091	UPPER BLADE GUIDE SUPPORT		1
2	13590	BIAS SHAFT		2
3	RS150000	RING	S15	3
4	BB620202A	BALL BEARING	6202ZZ	5
5	136445	HANDLE BUSHING		2
6	SR060703	HEX SOCKET BOLT	M6x35	2
7	135060	UPPER SPACING SLEEVE		
8	SS060200	SET BOLT	M6x10	
9	SR069400	HEX SOCKET BOLT	M6x16	4
10	135057	UPPER GUIDE SUUPORT BLOCK		
11	135053	ADJUST BAR		

**NOTE: SOME INDIVIDUAL PARTS MAY ONLY BE AVAILABLE AS AN ASSEMBLY**

**BP-480A LOWER GUIDE SPARE PARTS DIAGRAM**



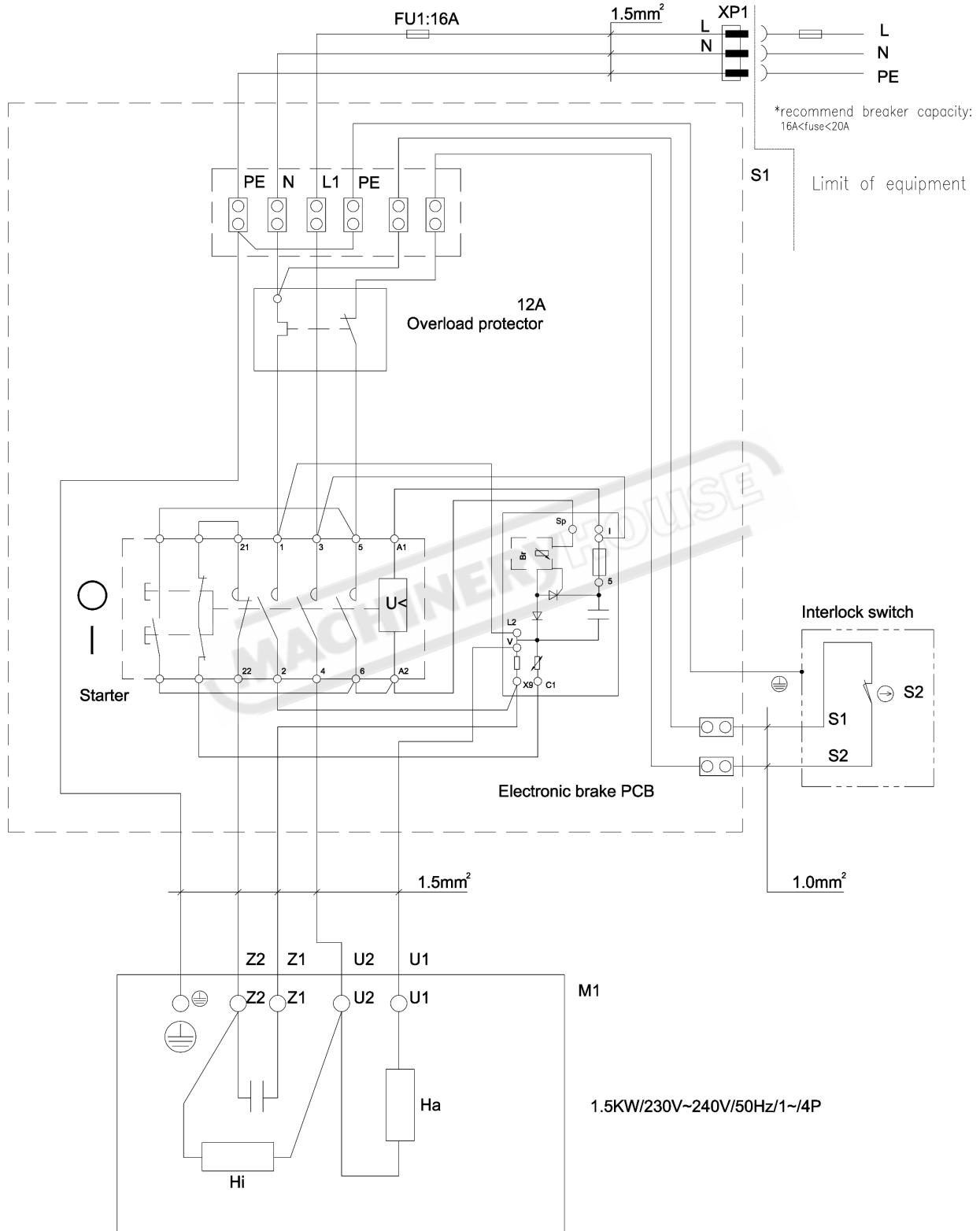
**BP-480A LOWER GUIDE SPARE PARTS LIST**

No.	Part No.	Description	Specification	Qty
1	135091	UPPER BLADE GUIDE SUPPORT		1
2	135090	BIAS SHAFT		2
3	RS150000	RING	S15	3
4	BB620202A	BALL BEARING	6202ZZ	5
5	136445	HANDLE BUSHING		2
6	SR060703	HEX SOCKET BOLT	M6x35	2
7	135060	UPPER SPACING SLEEVE		
8	SS060200	SET BOLT	M6x10	
9	SR069400	HEX SOCKET BOLT	M6x16	4
10	135057	UPPER GUIDE SUUPPORT BLOCK		
11	135053	ADJUST BAR		

**NOTE: SOME INDIVIDUAL PARTS MAY ONLY BE AVAILABLE AS AN ASSEMBLY**

**ELECTRICAL DRAWING**

\*electrical power supply:  
1~ 230V~240V 50Hz



**MOTOR**